

AS 03 A

Removable bridge safety contact, self-cleaning contacts. Protectors are provided for wiring with double insulation cable, max diameter 6.6mm and with normal cables up to 4mm diameter. Fastening screws are included. The standard model uses SH+M4x10 screws which protrude externally by 4mm. Other screws are available on demand. The A2 version offers the option to run cables underneath the contact body to achieve seal after fastening.

Contatto di sicurezza a ponte asportabile, contatti autopulenti, per il cablaggio sono previste protezioni per cavi a doppio isolamento di diametro max 6,6 mm e per cavi normali fino a 4 mm di diametro. Le viti di fissaggio sono incluse, il modello standard utilizza viti TC+M4x10 che fuoriescono all'esterno per 4 mm, altre viti sono disponibili a richiesta. La versione A2 offre la possibilità di passare i cavi sotto al corpo del contatto per realizzare una tenuta dopo il fissaggio.

TECHNICAL DATA DATI TECNICI

le/Ue:	2A/230VAC 2A/200VDC
Ith	4A
Ui	500V
load classes: classi di carico:	AC-15 Ie=2A Ue=230V DC-13 Ie=2A Ue=200V
mechanical lifetime: vita meccanica:	> 10,000,000 cycles
protection level: livello di protezione:	IP 20
bridge working stroke: corsa utile del ponte:	6 mm with PA 02 18
actuation force: forza di azionamento:	< 2 N
operating temperature: temperatura di lavoro:	-25°C +65°C
cabling tightening torque: coppia di serraggio per il cablaggio:	≤ 1.7 Nm with stranded wire max section 1.5mm ² con cavo a trefoli di sezione max 1,5mm ²

MATERIALS MATERIALI

body: corpo:	nylon - V0
cover: copercchio:	PC - V0
springs: molle:	stainless steel
contacts: contatti:	silver

REGULATIONS NORMATIVE

2014/33/UE
EN 81-20/50
EN 60947-5-1
GB 14048.5:2008
2011/65/UE (ROHS)
2003/11/EC


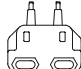

UL 508
CSA B44-13 2012-03
ASME A17.1-2013

1.2Nm (10.6 inch-lbf) torque
1x16 AWG to 14 AWG
Cu wire - solid or stranded

APPROVALS APPROVAZIONI

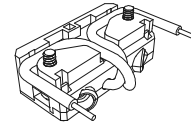
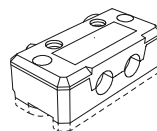
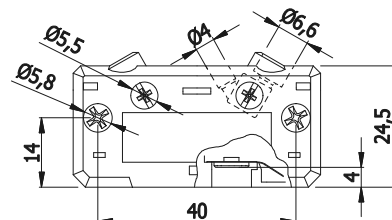
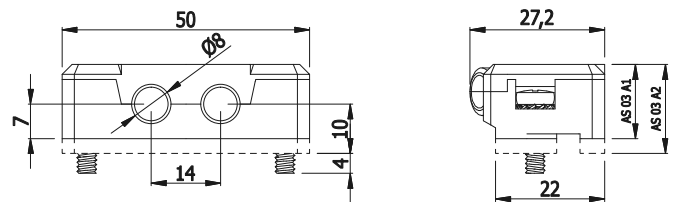
TÜV SÜD
UL
CCC

ACTUATORS AZIONATORI


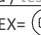
PA 02		p. 24
PA 03		p. 24
PA 05		p. 25

to be ordered separately
da ordinare separatamente

AS 03 A1



ORDERING CODES CODICI DI ORDINAZIONE

	AS 03 A 2 TC 6 T
series / serie:	AS 03 A
height / altezza: 1=15mm, 2=18mm	2
screw head / testa della vite: TC=  , EX= 	TC
screw protrusion / sporgenza della vite: 4=4mm, 6=6mm, 10=10mm, 19=19mm	6
screw thread type / tipo filettatura della vite: N=normal metric / normale metrico, T=tap-tite / trilobata	T