

With our connected and intelligent lift solution, you enter the third dimension of smart cities.



LIFT



Copsy BOX
Code **8D5898**

Bidirectional Speakerphone Terminal

- **Passive bidirectional speakerphone terminal**
- **EN 81-28, EN 81-70 standard compliant**
- **2 alarm leds EN 81-28**
- **Connection with RJ45 cable**
- **Integrated speaker and microphone**
- **Installation on top and pit**
- **Installation behind COP operator panel**
- **Volume digital adjustment**
- **Remote powered by COPPY**
- **Voice stations management**
- **Rugged plastic case**
- **Easy and quick installation**

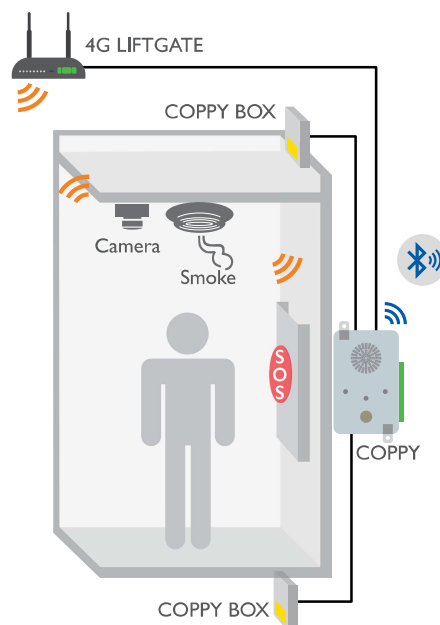
Copsy BOX is an innovative and versatile **audio terminal** for lift remote alarm applications, easy and quick to install.

Copsy BOX is used when performing **voice stations management** on lift top or pit.

Born from the experience of Digicom lift systems, Copsy BOX activates the remote alarm system and establishes two-way audio communications with the outside or with the engine room. It can be used for both **new installations** and **modernizations**.

The installation is ever easier. Just connect an RJ45 cable (LAN cable) with two wires only to the Copsy main unit.

Copsy BOX takes the necessary for operation from the central unit, including the connections of the microphone, speakers and power supply.



The button management on Copsy BOX is performed through **2 wires only** and no other connection is required.

Particular care has been paid to its realization to ensure the best audio quality by eliminating Larsen effects.

Its compact size (thickness of 19mm, among the thinnest on the market) makes the installation easier both on top or pit or in applications with the Coppy Metal BOX version behind the cabin operator panel (COP).

Coppy Boxes integrate the 2 leds according to EN81-28 regulation to signal the sent and the registered alarm. In this way you are sure that the alarm status is always signaled in any point: top/pit or car.



PACKAGE CONTENT

- 8D5898 COPPY BOX
- User's Guide

TECHNICAL FEATURES

- Passive speakerphone device for Coppy
- Remote powered by Coppy
- Integrated or external SOS button management
- Two-ways speakerphone
- Integrated microphone
- Integrated speaker
- 1 Alarm led enabled
- 1 Alarm led received
- Size: 100 x 64 x 19 mm
- EN 81-28, EN 81-70

