

942 STRAIN LINK SENSOR

QTY 1 **942 Strain Link** transducer

QTY 4 Screws, type M 6x30 8.8 DIN
933

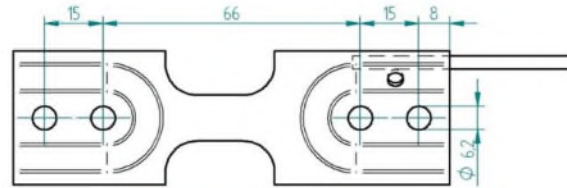
QTY 4 Flat Washers M 6, type UNI
6592

QTY 8 Fixing M6 nuts

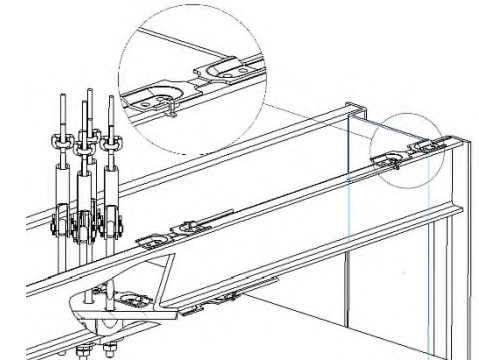
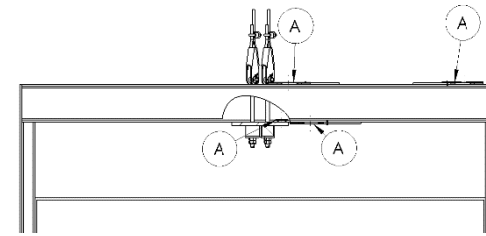
Suggested fixing torque

M6 screws = 10,30 Nm

(wrench with 10 mm hex. opening)

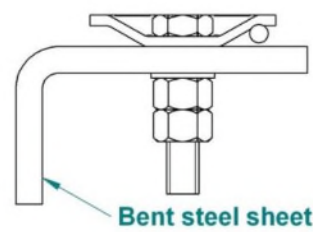
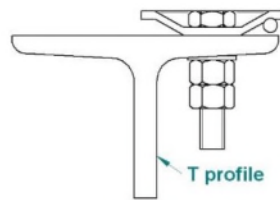
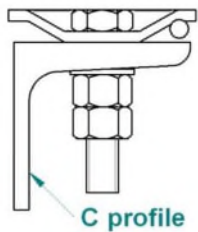
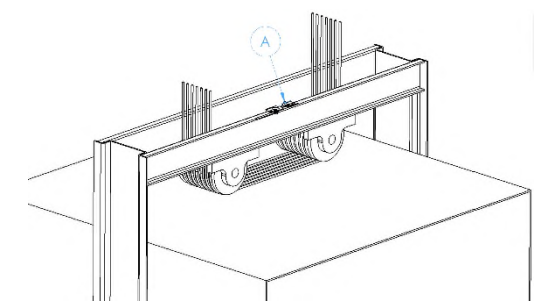
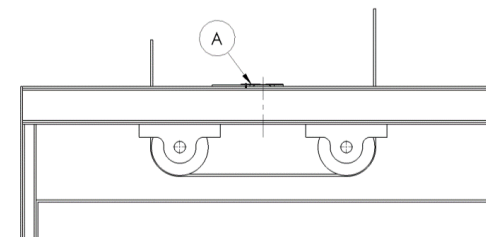
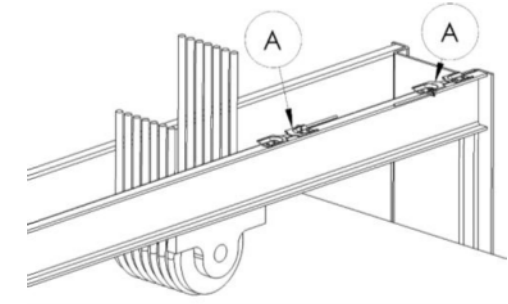
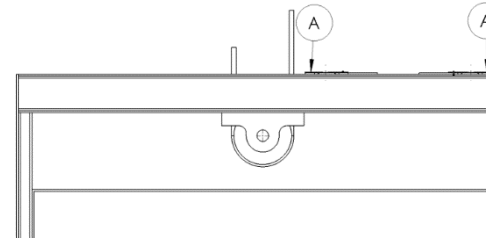
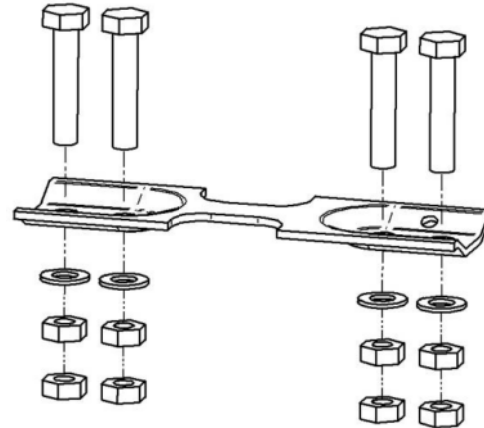


1 x 942 flexion Strain Link



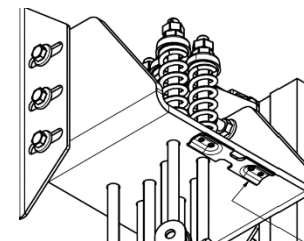
SENSOR INSTALLATION

- 1) 942 Strain link and 699 Plus are to be installed on the lift frame.
- 2) 942 Strain link must be fixed on a **flat and clean surface, without rust, paint grease or oil.**
- 3) Drill $\varnothing 6,2$ mm holes finishing hole edges to restore the plane (90° to the beam plane).
- 4) Use *flat washers* and tighten the 4 screws to fix strain link 942.
- 5) Connect 942 Strain Link to 699Plus.
- 6) *Ground to earth to 699Plus.*
- 7) Power 699Plus and wait 15 minutes before calibrating.



SENSOR INSTALLATION HINTS

Suggested installation position depends on car frame type. See below for possible mounting options of **A= 942 Strain Link** (1 sensor per car is required).



NOTE: 942 Strain Link measures the relative extension and has NOT to be installed where TORSION deflection occurs.