

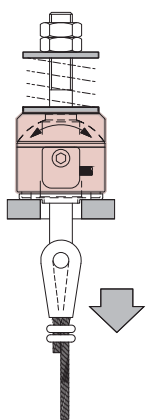
Sensor designed for the terminals fixed point



## PF Compression load cell

PF compression sensors are a weighing solution at the rope terminal fixed point of the traction elevators. These sensors are installed on each of the terminal fixed point receiving the weight individually from each rope.

It works on a compression load way of measurement, on which it provides the system with great reliability and mechanical robustness. With a compact design and occupying a minimal space, these sensors could support up to a thousand kilograms.



### For a complete installation

These sensors are installed at the terminal fixed point and have a USB cable output. In order to have an independent weight reading on each cable, we recommend using our OMEGA control unit. For installations that need to connect a set of sensors to a load limiter, with one single input:

PF sensors assemblies can be formed by joining these sensors to a INTERFACE<sup>1</sup>. The INTERFACE offer cable output without a wiring connection (5wires) or with USB (depending on the type of input of the controllers).

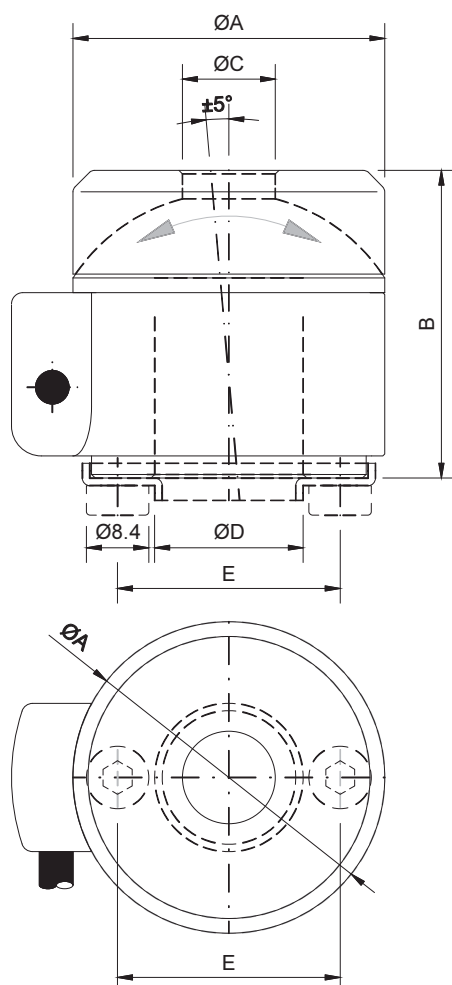


1- INTERFACE.

## Specifications

Parameter	Units	Specification		
Model	-	PF-300	PF-500	PF-1000
Nominal Load (N.L.)	kg	300	500	1000
Accuracy	-	0.1%		
Zero balance	%mV/V	± 0,020%		
Maximum excitation voltage	V	12		
Temperature range	Compensated	-10 ... +40 (+14 ... +104)		
	Operating	-20 ... +60 (-4 ... +140)		
	Storage	-20 ... +70 (-4 ... +158)		
Min. insulation resistance (V.Test = 100V)	GΩ	4		
Input resistance	Ω	350 ... 400		
Output resistance	Ω	350 ± 3		
Load limit	Working	150		
	Safe	300		
Cable	Type	4 x 0.14 mm <sup>2</sup> Ø4.3		
	Connector	USB		
	Standard length	2		
	Material	Polurethane (PU)		
Sensor	Material	Aluminum		
	Surface treatment	Anodiced		
Protection class	-	IP50		

## Dimensional Drawings (mm)



Model	ØA	B	ØC	ØD	E
PF-300	42	42	12.5	20	30
PF-500	47	45	16.5	20	32
PF-1000	54	50.5	25	30	39